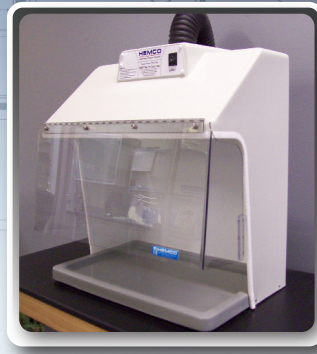


# Fume Hoods & Enclosures for Education

by **HEMCO**®



# HEMCO

Laboratory Planning Solutions

For Prompt  
Service Call: (816) 796-2900

[www.HEMCOcorp.com](http://www.HEMCOcorp.com)

## ENCLOSURES FOR EDUCATION

### Ductless Demonstration Hood

*The Demonstration hood is designed for classroom and group observation situations. The Ductless Demonstration Hood effectively removes fumes and odors while providing a clear, unobstructed view of the interior from all sides.*

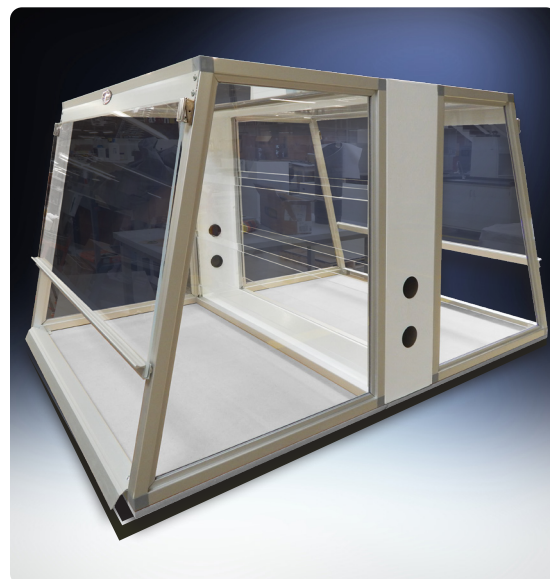
- Constructed with shatterproof clear acrylic, side and rear panels, 24" high and hinged front viewing sash.
- Chemical resistant Fiberglass Housing.
- Equipped with a vapor proof light fixture, and control switch.
- Integral Fan and Activated Carbon Filtration assembly to effectively absorb, fumes, odors, non-hazardous chemical vapors, including control switch and filter change light.
- Dimensions 35" wide X 24" deep X 30.5 " high.



### SSE Enclosure

*Versatile vented enclosure is ideal for student workstations, weighing operations, and light duty fume hood procedures.*

- Energy efficient SSE requires less air from the lab than traditional fume hoods.
- Constructed with chemical resistant metal framing with 1/4" thick clear acrylic side panels, ceiling, and viewing sash allowing clear sight lines through to lab.
- The viewing sash is angled 15 degrees for ease of viewing comfort with 8" reach in opening height. Sash swings up to provide 24" access opening.
- Available as a single unit or back to back assembly in 30", 36" and 48" widths with 30" height. of exhaust air is greatly reduced.



### VSE Balance Enclosure

*Versatile vented balance enclosure is ideal for critical weighing procedures, pathology, cytology, and histology applications.*

- VSE is offered in 24", 36" and 48" widths to accommodate analytical balances, instrumentation and work processes.
- Efficient air flow design with air foil and by-pass, directs fumes and airborne particulate to baffled exhaust ensuring containment and user protection.
- Constructed of chemical resistant metal framing with 1/4" thick clear tempered safety glass side panels and clear acrylic viewing sash.
- Viewing sash is angled 15 degrees for ease of viewing comfort with 8" reach in opening height. sash swings up to provide 20" of access opening.





# FUME HOODS FOR EDUCATION

## UniFlow LE Dual Entry

*Designed to locate between a school prep room and classroom, classroom to classroom, or on an island location. The instructor can perform a demonstration and students can safely observe from opposite side.*

- Equipped with vapor proof light and features a unitized dual wall composite resin construction for superior chemical resistance and durability. Surface finish is molded in, Not a paint finish.
- Offered in 48", 60", 72" & 96" widths, and 30", 36", & 48" depths
- Convenient horizontal sliding tempered glass panels on front and rear allow user access and procedure setup
- Optional Base cabinet, Worksurface, Sinks, electrical accessories and service fixtures to meet specific user needs.



## UniFlow LE AireStream Fume Hoods

*Cost Effective, Energy Efficient Solution for budget sensitive projects.*

- Constructed entirely of chemical resistant, flame retardant non-metallic composite resin.
- Features a unitized dual wall construction, eliminating all assembly screws, rivets, brackets, bolts and nuts.
- Offered in 36", 48", 60", 72" & 96" widths.
- Vapor proof LED Light fixture or explosion proof light.
- The aerodynamic face opening with air foil provides uniform air flow into the fume chamber, and thru the Vector AireStream Baffle System, to a bell-shaped exhaust collar.
- U.L. 1805 Classified for Fume Hoods and Cabinets



## UniFlow CE AireStream Fume Hoods

*The UniFlow CE Hoods are built with all of the features of a full size traditional hood, except in a energy saving compact sizes.*

- Available in of 30", 36", 48" & 72" widths, with either vapor proof or explosion proof light and optional built-in exhaust blower.
- UniFlow Superstructure features exclusive unitized dual wall construction for superior chemical resistance, strength, and durability. Meets NFPA-45 Classification with Flame Spread of less than 25 per ASTM E-84.
- The aerodynamic face opening with air foil provides uniform air flow into the fume chamber, and thru the Vector AireStream Baffle System, to a bell-shaped collar.
- U.L. 1805 Classified for Fume Hoods and Cabinets



## MicroFlow I, II & III Workstations

**The MicroFlow Ductless Workstations are a cost effective solution to addressing small amounts of fumes, odors, non-hazardous chemical vapors and particulate filtration.**

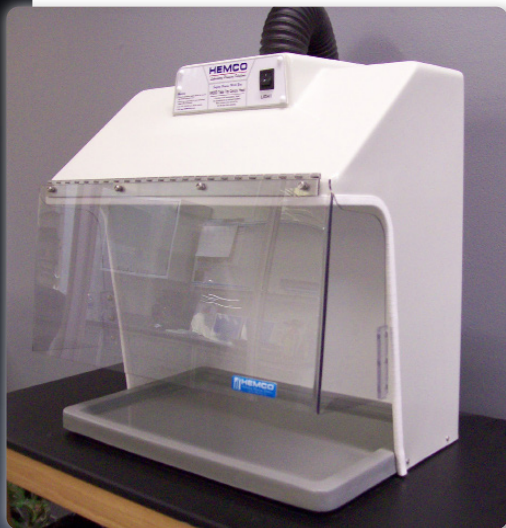
- Designed as a Class I enclosure for clinical, student, forensic, tissue staining.
- Completely self contained with integral recessed work surface to contain spills. Clear shroud with safety viewing sash allows visibility from 3 sides, and provides both safe observation and access to inside work area.
- Operates on 115V AC, or 230V International, Conforms to UL, CSA, & CE requirements.
- Equipped with a built-in fan, carbon filter, pre-filter, switches and Filter change light.



## Model 24000 Vented Table Top Hood

**Typical Applications for the 24000 vented workstation include: Histology, Microprocessor, Venting for Hot Plates, Microscope Stations, Student Workstations, and Sample Weighing Stations.**

- Constructed of chemical resistant, non-metallic advanced composites, hood can be vented or ductless..
- Molded chemical resistant work surface is dished to contain spillage.
- Side and rear walls serve to contain fumes and reduce cross drafts, providing turbulence free work area.
- Vented model has a 3" diameter outlet collar for duct connection
- A selection of accessories are available
- Ductless model is equipped with carbon filter assembly, integral fan, switches and filter change light.
- Dimensions are 24" wide X 15" deep X 24" high.



## Canopy Hoods

**Canopy hoods are designed to collect and exhaust corrosive vapors, heat, steam, and odors when mounted over areas with water baths, hot plates, or portable equipment.**

**Standard color: silver beige**

- Manufactured from chemical resistant composite materials, or type 304 stainless steel. Canopy hoods are lightweight and can be wall-mounted or suspended from the ceiling over island locations.
- The Canopy Fume Hood's glass smooth surfaces provide superior chemical, corrosion and heat resistance. Uniflow technology provides uniform air flow with less turbulence.
- Optional side panels prevent cross drafts and further improve airflow while providing a way to contain chemical spills.



HEMCO Corporation  
711 S. Powell Road  
Independence, MO 64056  
EDB-09.25

# HEMCO

**Laboratory Planning Solutions**

**Specify UniFlow Fume Hoods  
on Your Next Lab Project**

**www.HEMCOcorp.com**